

IMPORTANT: Safety and Warranty

REMOVE & READ THIS TAG PRIOR TO USING

HWI FIRE PIT

It is the responsibility of the installer to follow the instructions provided with this unit. Failure to do so could cause an explosion or uncontrolled fire resulting in property damage, personal injury, or loss of life.

Here are key points included in the instructions-please read instructions entirely prior to use:
Remote Control Use – power to electrical outlet for receiver must have capability to turn OFF power when not in use to prevent unwanted start-up.

PLEASE NOTE – Ignition Delay: The firepit is designed to ignite main burner after thermocouple gets hot- common time is ~30 seconds after turned “ON”.

Enclosure:

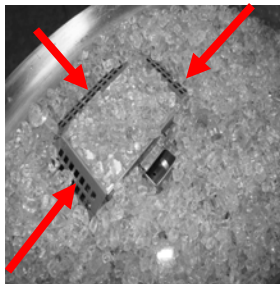
1. Construct enclosure of stable and non-flammable material.
2. Clearances surrounding pit: **120” above, 48” surrounding sides.**
3. Ventilation: Requirement of **two (2) 18 sq. in. minimum** openings in the side of enclosure for cooling.
4. Fire Pit should be recessed **4”** from top of enclosure for wind protection.
5. Fire Pit must be installed above ground and have good drainage.

Installation:

1. Confirm your pit is built for proper gas use – **Natural** or **LP**.
2. **Do NOT exceed maximum input pressures- see instructions.**
3. Gas shutoff must be **outside enclosure** – refer to your local codes.
4. Lava rock/glass coverage should be at a minimum to prevent smothering of flame and for correct operation – see ‘**LAVA ROCK** and **GLASS APPLICATION**’ instructions before applying.

⚠ WARNING: GLASS MEDIA USAGE WITH LP GAS- WHEN USING APPROVED DECORATIVE GLASS TO COVER BURNER APPLY ONLY ENOUGH TO HIDE BURNER. APPLYING OVER 1/2” MAY CREATE BACK PRESSURE AND GAS LEAKAGE FROM AIR MIXER RESULTING IN LP POOLING UNDER FIRE PIT. LAVA ROCK MAY BE APPLIED DEEPER DUE TO LARGER SIZE- LAVA ROCK MAXIMUM DEPTH IS 3” ABOVE BURNER.

5. **DO NOT** cover blowout box opening with lava rock or glass.



DO NOT COVER VENTS!



DO NOT COVER PILOT OPENING!

Operation:

1. Test for gas leaks prior to use – **ADHERE TO ALL LOCAL CODES!**
2. When pit is not in use, **turn OFF gas and/or power** to prevent unwanted start-up.
3. Keep fire pit covered at all times when not in use.