



SE-UP1

Installation Instructions for Kit Upgrading from ME or RE to SE functionality. Includes; Latching Solenoid, Receiver, One of four Wireless Remote Devices, and batteries.

LISTED BY
RADCO
• CERTIFICATION • LISTING
• TESTING • INSPECTION
LISTING NO. 1180

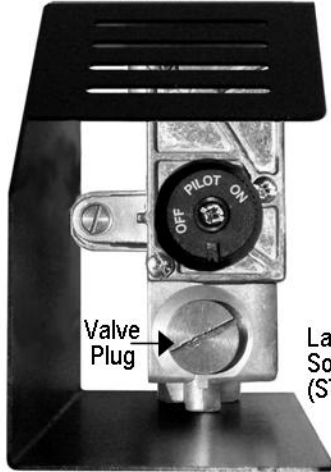
Rasmussen GAS LOGS & GRILLS

12028 E. PHILADELPHIA ST. WHITTIER CA 90601 U.S.A.
www.rasmussen.biz

FORM: SE-UP1-10-06

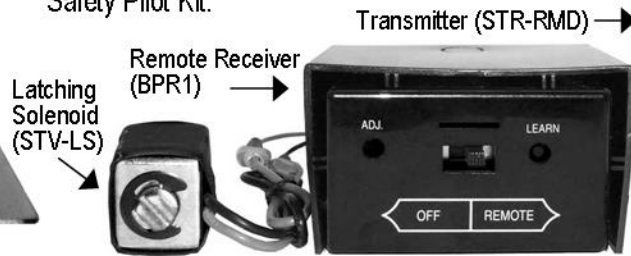
INSTALLING YOUR NEW LATCHING SOLENOID

Model SPK3E



Your "EASY" Safety Pilot Kit will have come with either a **Valve Plug** or a **HI/LO DC Motor Drive** that must be removed before the **Latching Solenoid** can be installed. Once removed you will find a unique safety seal (see photo at bottom right) that prevents gas leakage during upgrading without shutting off the main gas valve that supplies gas to the "EASY" Safety Pilot Kit.

Model RMC1E

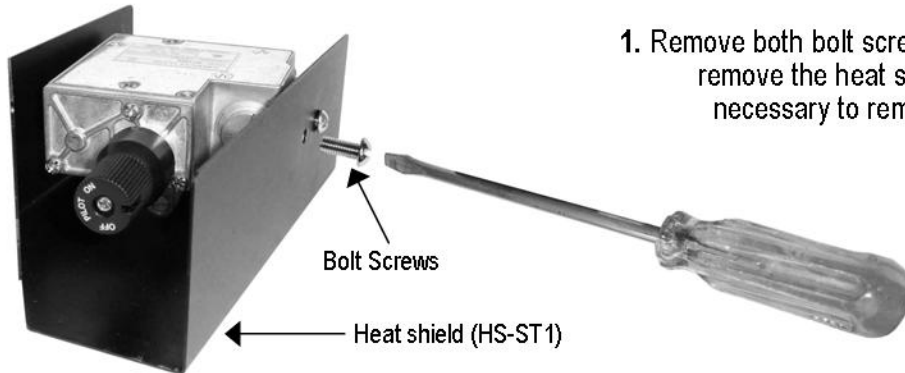


Transmitter (STR-RMD)

Remote Receiver (BPR1)

Latching Solenoid (STV-LS)

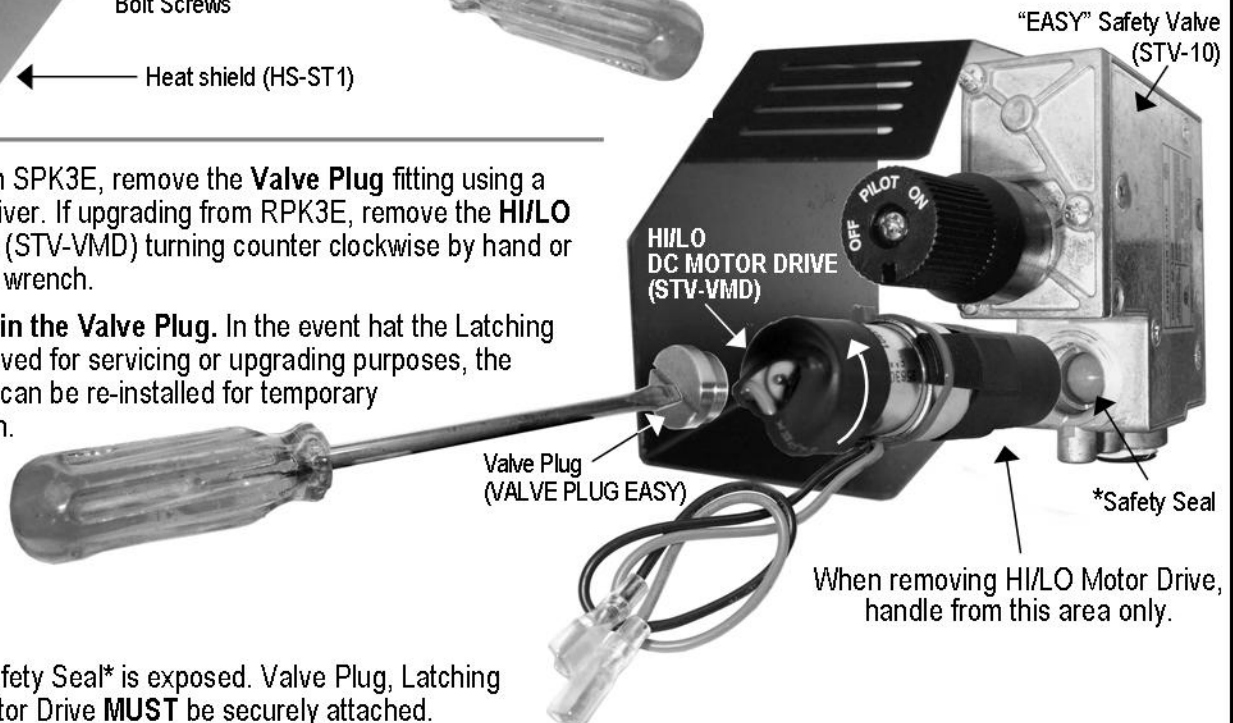
HI/LO DC Motor Drive



1. Remove both bolt screws from the metal heat shield then carefully remove the heat shield from the "EASY" Safety Valve. It is not necessary to remove the "EASY" Safety Valve from the main gas supply or burner during upgrade.

2.) If upgrading from SPK3E, remove the **Valve Plug** fitting using a flathead screwdriver. If upgrading from RPK3E, remove the **HI/LO DC Motor Drive** (STV-VMD) turning counter clockwise by hand or using a crescent wrench.

Important: Retain the Valve Plug. In the event that the Latching Solenoid is removed for servicing or upgrading purposes, the valve plug fitting can be re-installed for temporary manual operation.

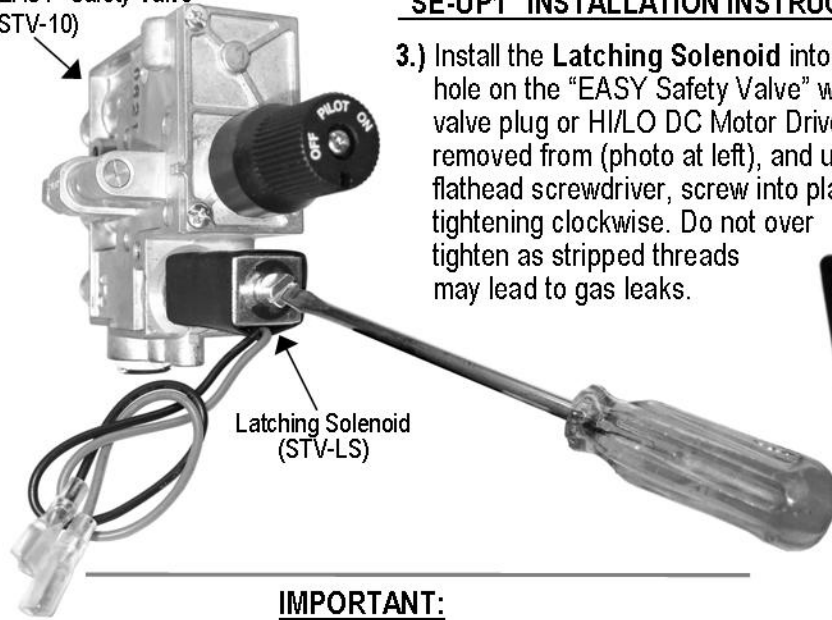


When removing HI/LO Motor Drive, handle from this area only.

WARNING:

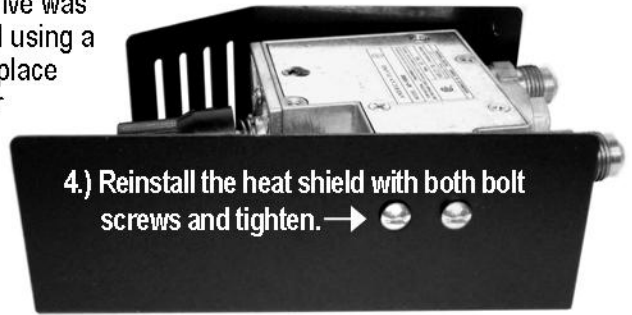
Never operate if Safety Seal* is exposed. Valve Plug, Latching Solenoid or DC Motor Drive **MUST** be securely attached.

"EASY" Safety Valve (STV-10)



"SE-UP1" INSTALLATION INSTRUCTIONS (CONT'D)

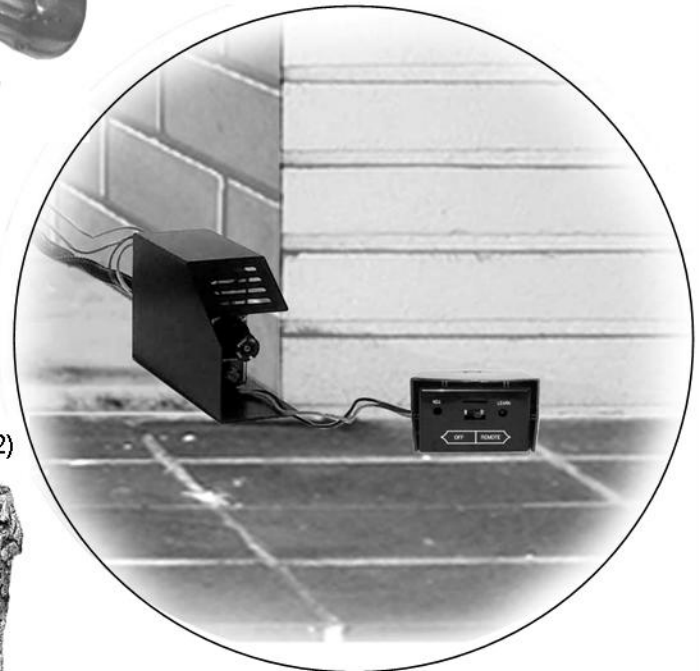
3.) Install the Latching Solenoid into the threaded hole on the "EASY" Safety Valve where the valve plug or HI/LO DC Motor Drive was removed from (photo at left), and using a flathead screwdriver, screw into place tightening clockwise. Do not over tighten as stripped threads may lead to gas leaks.



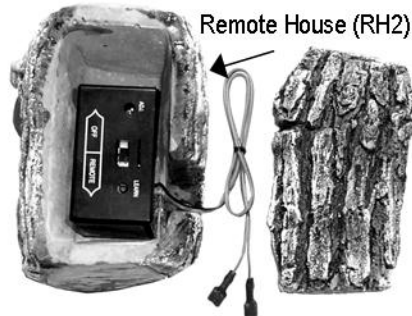
4.) Reinstall the heat shield with both bolt screws and tighten. →

IMPORTANT:

Receiver wires are connected to the "EASY" Safety Valve, Latching Solenoid and Remote Receiver by the factory. All are adversely affected by heat, and must be placed as far forward and to the side of the burner pan as possible. Insure that the plastic heat shield is located over the Remote Receiver below left, then locate the Receiver in an area that will not exceed 130°F. This location will always be away from the "EASY" Safety Valve and as far forward of the of the firebox as possible (see photo at right).



Receiver with plastic heat shield attached



Remote House (RH2)

NOTE: Remove plastic heat shield from remote receiver only when placing in Remote House (RH2) above left. The proper placement of the Remote House is outside the fireplace and as with the receiver, away from heat and as far forward of the firebox possible.

Your "SEUP1" Upgrade may be controlled by any one of these four Wireless Remote Transmitter Devices (each sold separately)

(See instructions included with remote devices for operation.)

Wireless On/Off Remote with Thermostat (THR-2R)



Wireless Wall Thermostat (TS-2R)



Wireless Wall Switch (WS-2R)



Wireless Wall Timer (Up to 120 Minutes) (WT-2R)



What sets Rasmussen Safety Pilot Kits apart from those of other manufacturers, aside from quality, is the ease and affordability with which our valve can be upgraded from manual operation to one of several remote control devices!